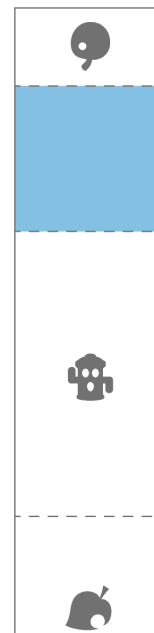
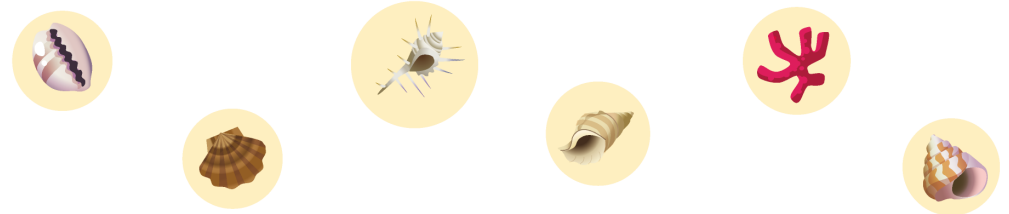


↓ Backdrop



1. *Cut out all parts.
2. Fold the backdrop inward along the solid line.
3. Fold outward along the dotted lines.
4. Attach 🌸 🐞 🍎 to their corresponding marks on the backdrop.
5. Attach the back of the characters to 🧑‍🎨.



↑ Characters

*Kids, ask a grown-up to help with scissors.
The content on this website is provided to you for your personal use.